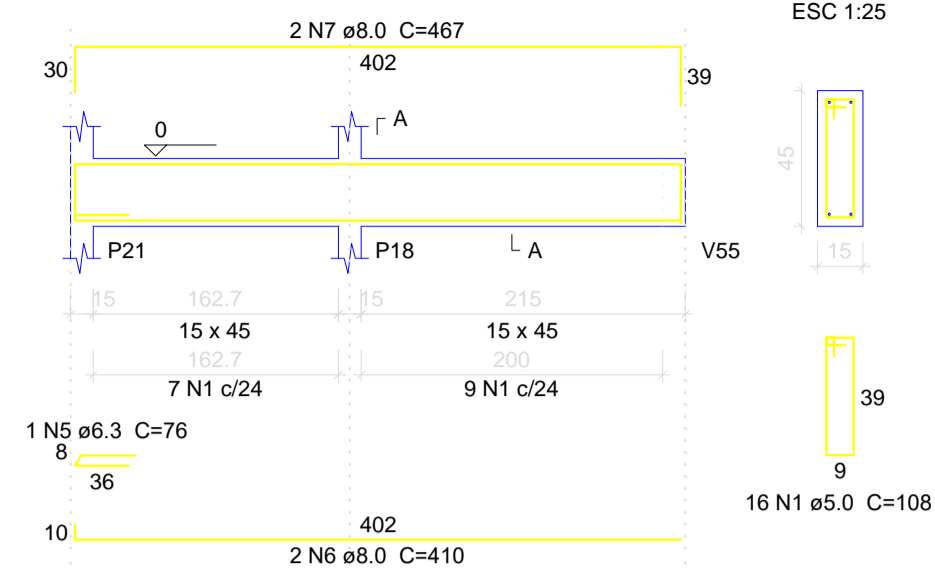
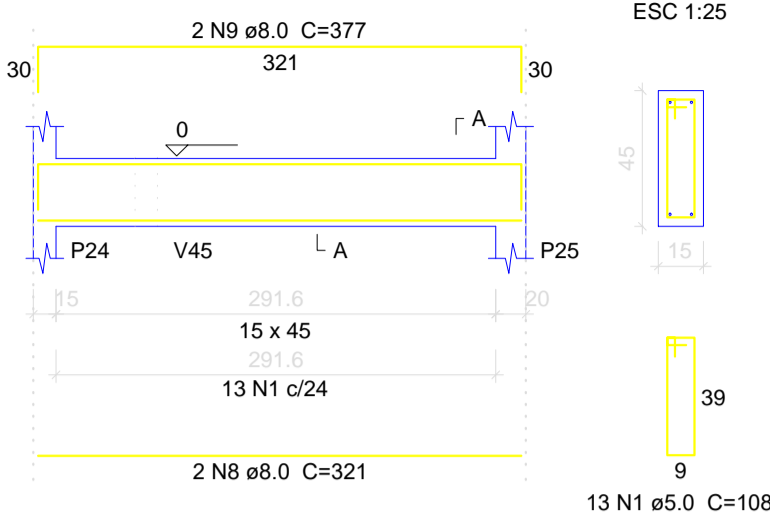


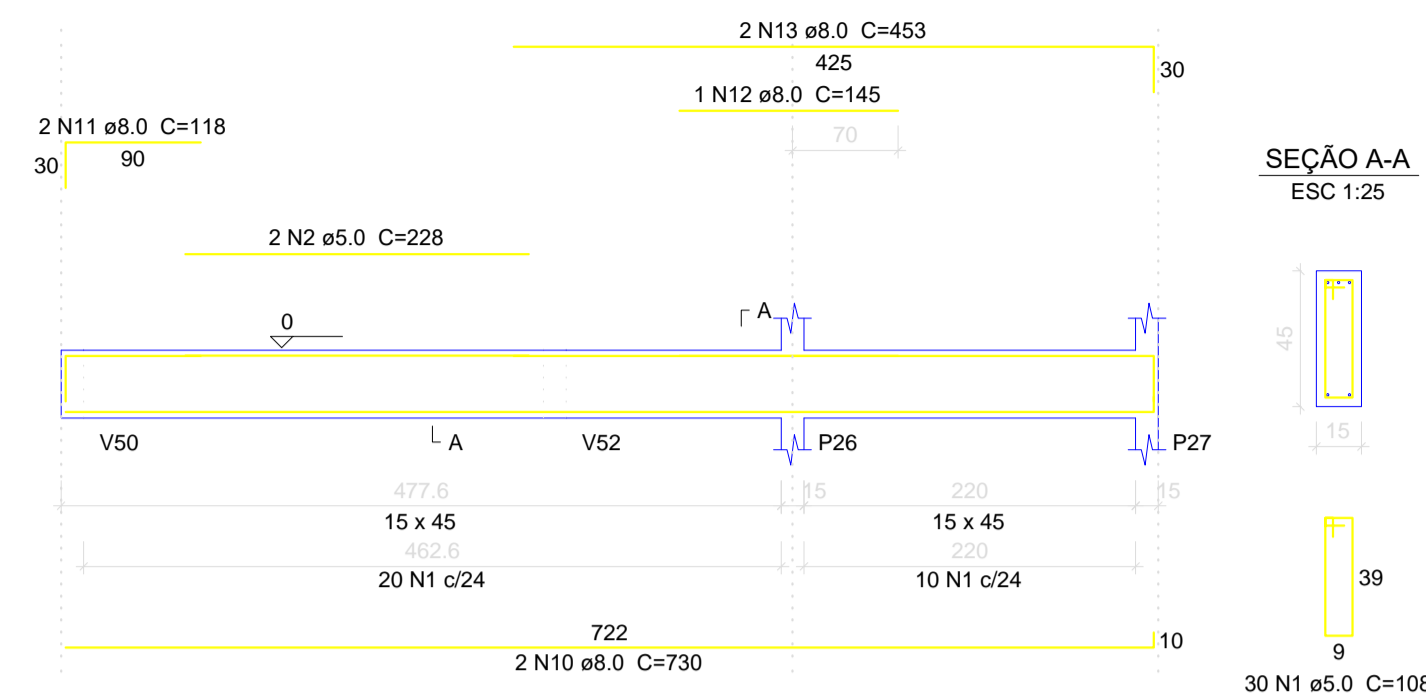
V5
ESC 1:50



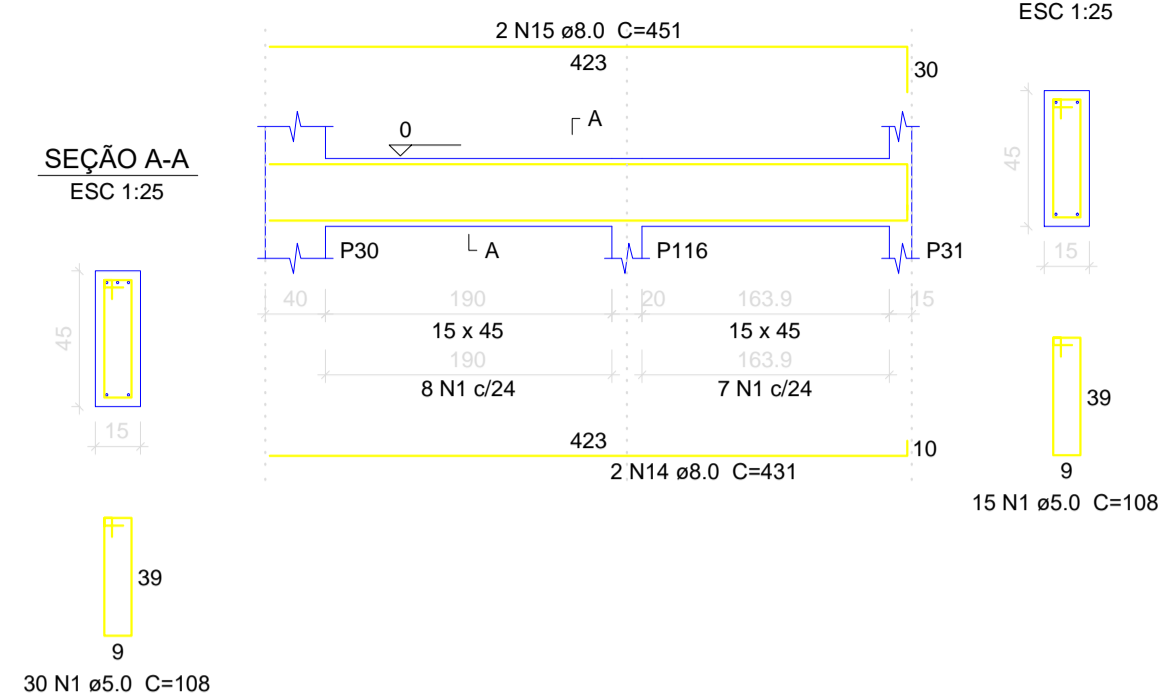
V6
ESC 1:50



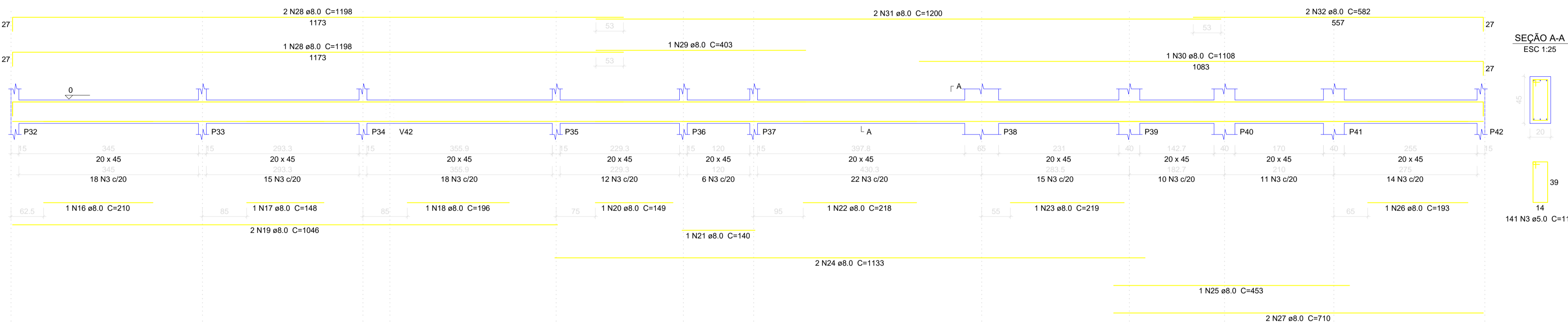
V7
ESC 1:50



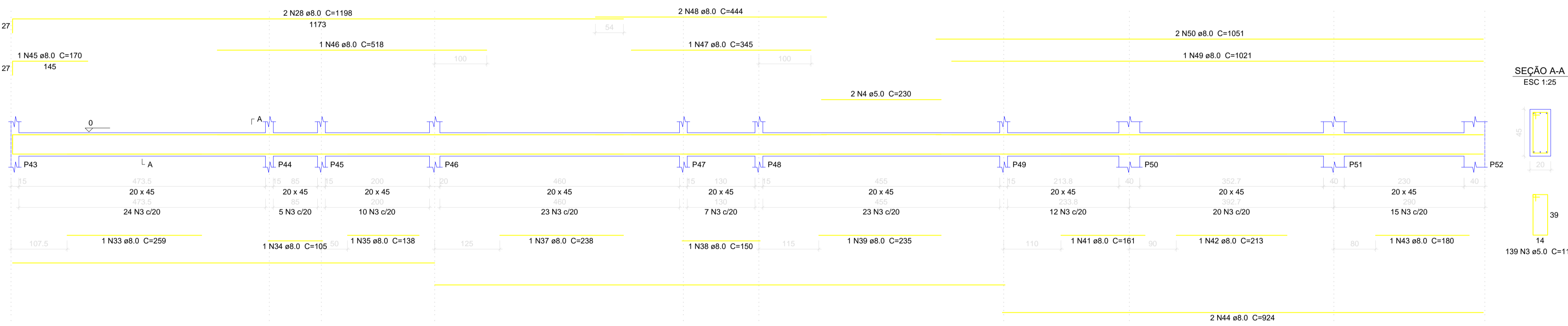
V8
ESC 1:50



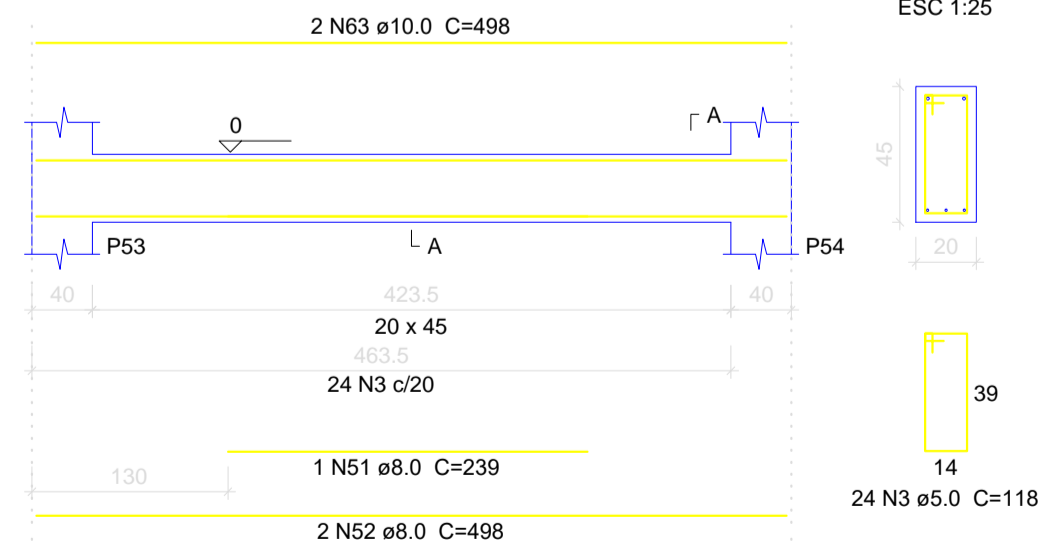
V9
ESC 1:50



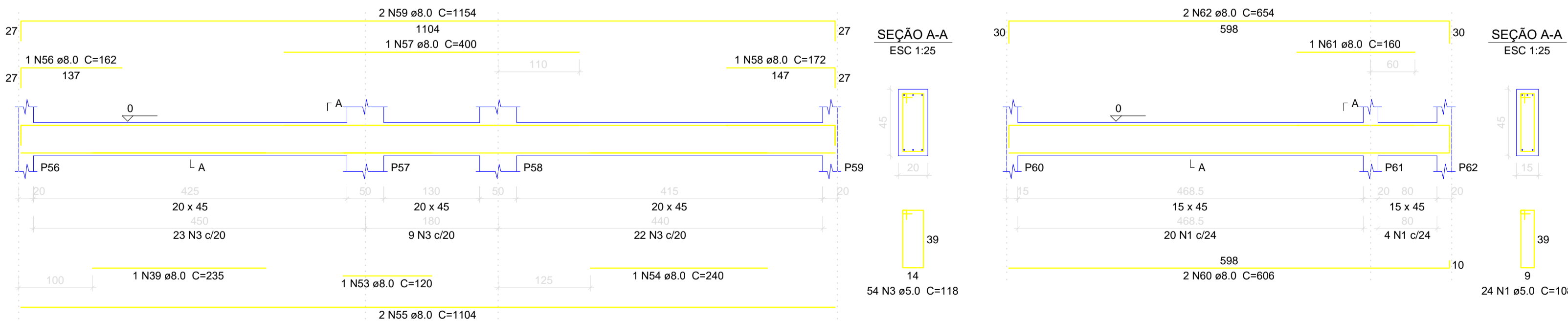
V10
ESC 1:50



V11
ESC 1:50



V12
ESC 1:50



Relação do aço

AÇO	N	DIAM (mm)	QUANT (Barras)	UNIT (cm)	C.TOTAL (cm)	AÇO	DIAM (mm)	C.TOTAL (m)	PESO + 10% (Kg)
CA60	1	5.0	98	108	10584	CA50	6.3	0.8	0.2
	2	5.0	2	228	456		8.0	485.9	210.9
	3	5.0	358	118	42244		10.0	10	6.8
	4	5.0	2	230	460		5.0	537.5	91.1
CA50	5	6.3	1	76	76				
	6	8.0	2	410	820				
	7	8.0	2	467	934				
	8	8.0	2	321	642				
	9	8.0	2	377	754				
	10	8.0	2	730	1460				
	11	8.0	2	118	236				
	12	8.0	1	145	145				
	13	8.0	2	453	906				
	14	8.0	2	431	862				
	15	8.0	2	451	902				
	16	8.0	1	210	210				
	17	8.0	1	148	148				
	18	8.0	1	196	196				
	19	8.0	2	1046	2092				
	20	8.0	1	149	149				
	21	8.0	1	140	140				
	22	8.0	1	218	218				
	23	8.0	1	219	219				
	24	8.0	2	1133	2266				
	25	8.0	1	453	453				
	26	8.0	1	193	193				
	27	8.0	2	710	1420				
	28	8.0	5	1198	5990				
	29	8.0	1	403	403				
	30	8.0	1	1108	1108				
	31	8.0	2	1200	2400				
	32	8.0	2	582	1164				
	33	8.0	1	259	259				
	34	8.0	1	105	105				
	35	8.0	1	138	138				
	36	8.0	2	819	1638				
	37	8.0	1	238	238				
	38	8.0	1	150	150				
	39	8.0	2	235	470				
	40	8.0	2	1095	2190				
	41	8.0	1	161	161				
	42	8.0	1	213	213				
	43	8.0	1	180	180				
	44	8.0	2	924	1848				
	45	8.0	1	170	170				
	46	8.0	1	518	518				
	47	8.0	1	345	345				
	48	8.0	2	444	888				
	49	8.0	1	1021	1021				
	50	8.0	2	1051	2102				
	51	8.0	1	239	239				
	52	8.0	2	498	996				
	53	8.0	1	120	120				
	54	8.0	1	240	240				
	55	8.0	2	1104	2208				
	56	8.0	1	162	162				
	57	8.0	1	400	400				
	58	8.0	1	172	172				
	59	8.0	2	1154	2308				
	60	8.0	2	606	1212				
	61	8.0	1	160	160				
	62	8.0	2	654	1308				
	63	10.0	2	498	996				

Resumo do aço

AÇO	DIAM (mm)	C.TOTAL (m)	PESO + 10% (Kg)
CA50	6.3	0.8	0.2
	8.0	485.9	210.9
	10.0	10	6.8
CA60	5.0	537.5	91.1
PESO TOTAL (Kg)			
CA50		217.9	
CA60		91.1	

Volume de concreto (C-25) = 8.23 m³
Área de forma = 106.2 m²



PROJETO DE ENGENHARIA PRANCHA 04/14

OBJETO: Projeto Estrutural Hospital Municipal
END: Rua 16 nº 1.063 - Bairro Nacib Jabur Maluf - Itapagipe/MG
PROP: Município de Itapagipe-MG
CPF/CNPJ: 21.226.840/0001-47

Quadro de assinaturas:

Proprietário CPF/CNPJ	Benice Nery Maia Prefeita Municipal
Resp. Técnico CPF/CNPJ	Secretaria Municipal de Obras Rodolfo Costa Agreli CREA/SP:5070412203-LP

Aprovação: